



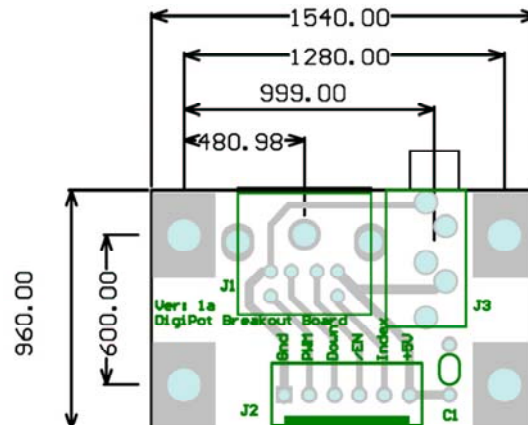
# HOMANN DESIGNS

## DA-01 DigiSpeed™ Breakout Board

The DigiSpeed™ Breakout board provides an easy way to connect the DigiSpeed™ controller to your CNC controller breakout board.

The DigiSpeed™ breakout board routes the 6 pins of the female minidin connector J1, to the 0.1" spacing screw terminal block connector J2. The board also has a 3.5mm stereo jack PCB footprint for external index pulse input.

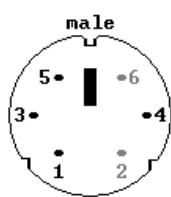
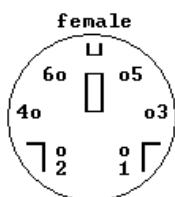
The pin-outs for the male and female mini-din connectors are shown below. The diagrams are to be viewed when looking into the mini-din connector.



Note: The component overlay text for connector J2 on board Ver:1.0 has an error.

The labels for pin 3 and pin 4 of connector J2 are incorrect and should be reversed.

The overlay text shown above on Ver:1a above is **correct**.



Signal	J1 Pin	J2 Pin
GND (0V)	3	1
PWM/STEP/UP/DATA	5	2
DOWN/CLOCK	1	3
ENABLE	2	4
INDEX	6	5
VCC (+5V)	4	6

The breakout board may be mounted to a vertical panel with the two right angle brackets supplied. Alternatively, it could be mounted to a horizontal panel via four stand-offs (not Supplied).

© Copyright 2004 Homann Designs

<http://www.homanndesigns.com>